

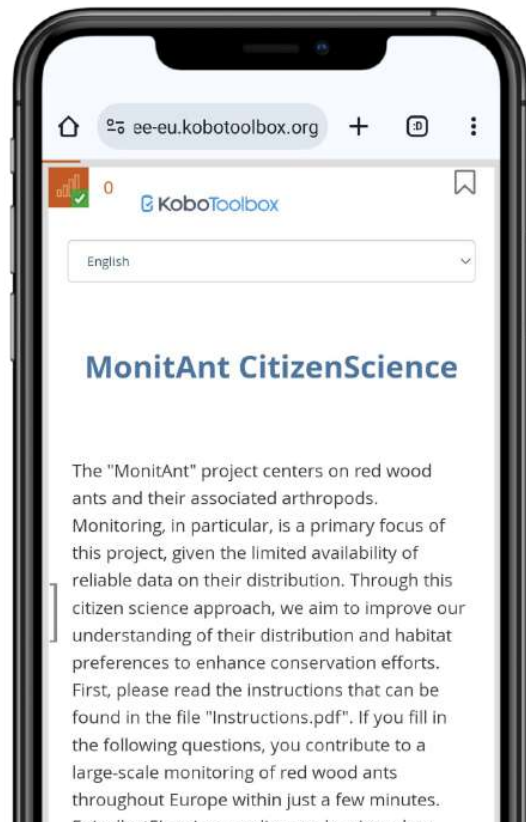
# Instructions for the MonitAnt Survey using Kobotoolbox

Open the project

On your smartphone  
Click/Scan the following link:



<https://ee-eu.kobotoolbox.org/x/OIRjEldX>

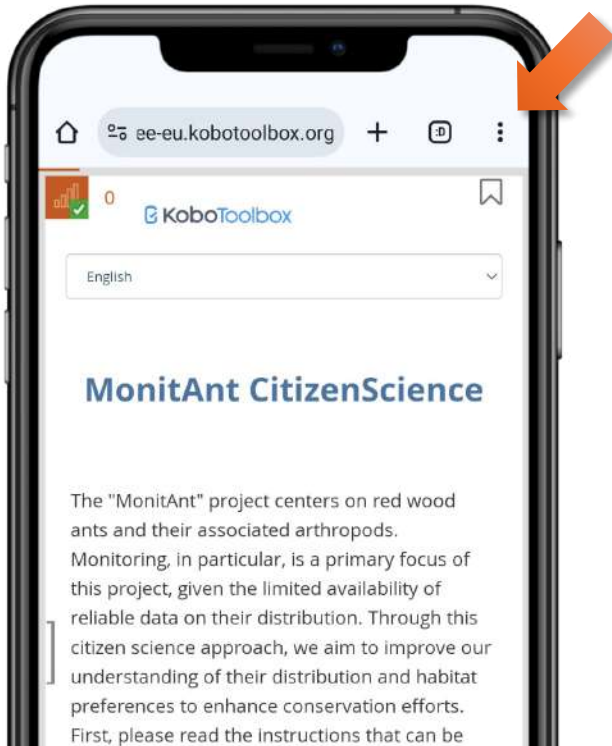


**Melvin Opolka**

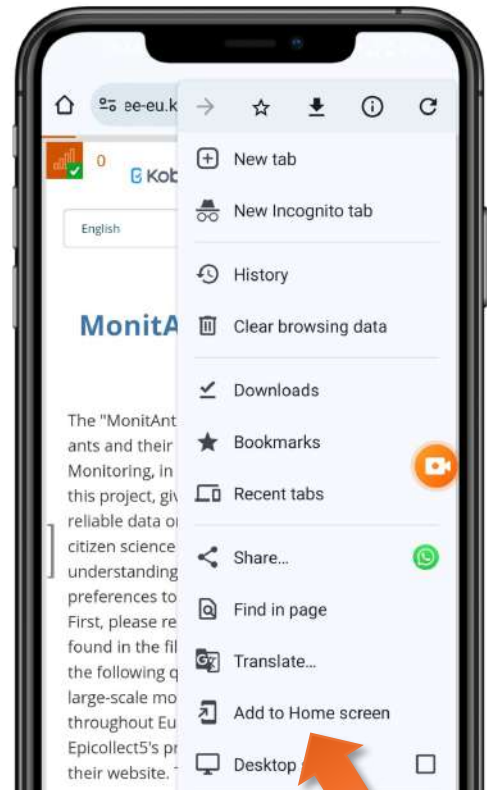
melvin.opolka@uni-bayreuth.de  
University of Bayreuth  
Population Ecology  
Universitaetsstr. 30  
D-95447 Bayreuth

## Add the survey to your homescreen - for Android

1. Click on the three points in the upper right corner



2. Click on “Add to Home screen”

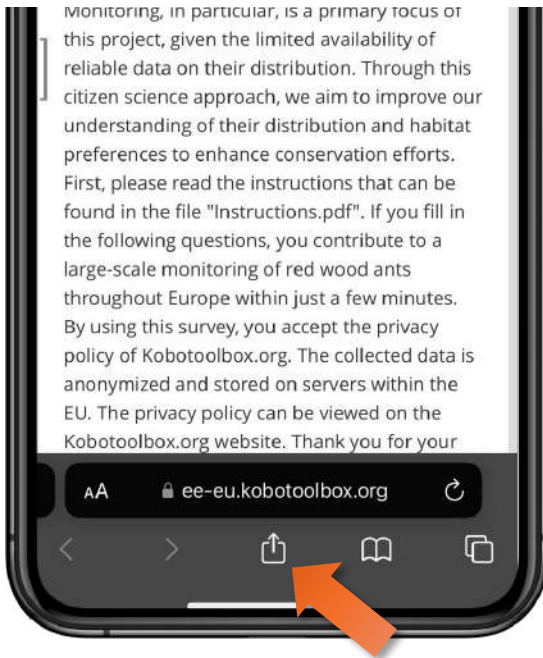


3. Create shortcut with the name of your choice and add it to the home screen



## Add the survey to your homescreen - for IOS

1. click on the icon in the center of the bar at the bottom



2. Click on "Add to Home screen"



3. Create shortcut with the name of your choice and add it to the home screen





# What are we looking for?



Vary in size and form!

## The wood ant nest:

Consist of organic material (needles, twigs but also moss, lichen, etc.)

Often found in sun-exposed areas in the forest, on the edge of the forest or in the meadow. Often also on roadsides on slopes.

The mound is regularly built on dead wood such as old tree trunks or branches. Some colonies build branch nests and so there are several nests in close proximity to each other.

Mostly in coniferous forests or mixed forests with spruce or pine.



A typical nest of *Formica polyctena* in a mixed forest.



*Formica pratensis* nest in a meadow.

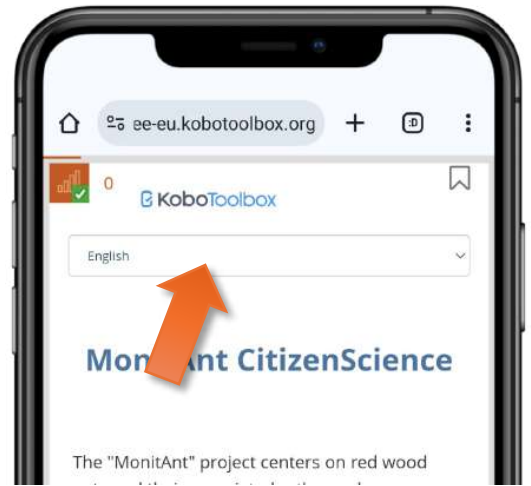


## Adding observations

1. Open the survey by clicking on the icon on your home screen



2. Language can be changed by clicking on the drop-down menu



3. Just enter the data by clicking on the respective fields



Measurements for height and diameter are in centimeter

Coordinates will be taken automatically.

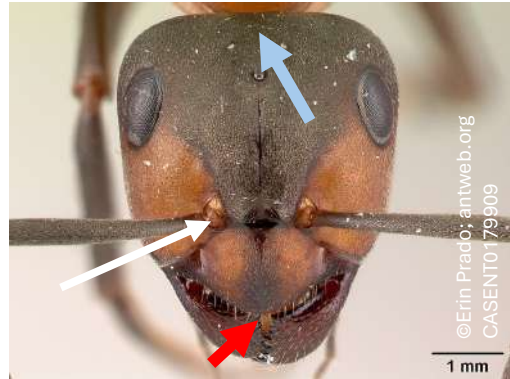
All you have to do is click on the button in the middle and allow access to the GPS.



# Ant identification

Identifying wood ants can be challenging and requires experience. If you have a magnifying glass or know the exact species, feel free to share this information in the survey. The brief descriptions below should help with species identification. Otherwise, just click "No" when asked if you are an ant expert.

Reddish-black, with red cheeks and a sudden transition to black. Nests are often made of spruce needles and other natural materials (flowers, twigs, blades of grass, etc.). Head shield (Clypeus, red arrow) and upper head edge (blue arrow) not indented.



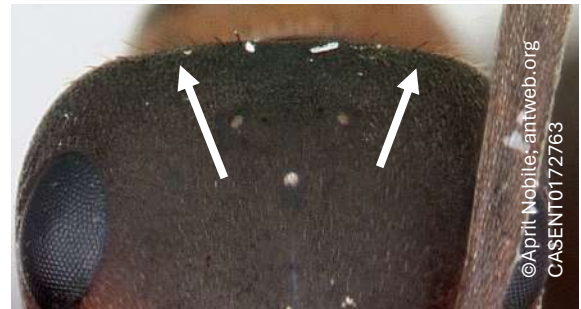
Mound-building wood ants  
(*Formica s. str.*)

Head with standing hair crown on the back of the head.



Continue with [page 7](#)

Head with standing hair on the edges of the head, large nests in highlands.



Scottish wood ant  
(*Formica aquilonia*)

Head without standing hair on the back of the head.



Continue with [page 8](#)

## Ant identification

Black spot on the back faded. Nests at an altitude of up to 2400m.



©April Nobile; antweb.org  
CASENT0173010

*Hairy wood ant*  
(*Formica lugubris*)

in the Apennines and the Western Alps also  
*F. paralugubris*



Extensive black spot, sharply defined. Rarely over 1.000m altitude, nests often in open habitats (meadows etc.) overgrown with grass.



©April Nobile; antweb.org  
CASENT0173148

black-backed meadow ant  
(*Formica pratensis*)

Head and back reddish, no black spot.

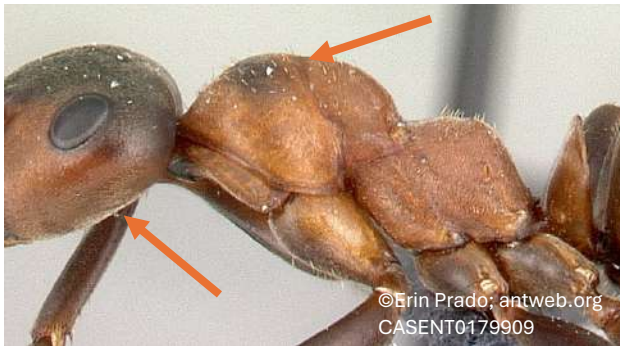


©April Nobile; antweb.org  
CASENT0173144

*Formica truncorum*

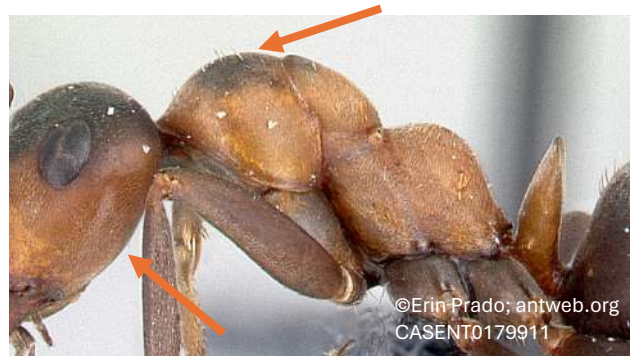
## Ant identification

Underside of head with a minimum of 10 long hairs, back (pronotum) with a minimum of 30 hairs.



Red wood ant  
(*Formica rufa*)

Underside of head with a maximum of 7 short hairs, back (pronotum) with a maximum of 15 hairs, often completely hairless.



*Formica polyctena*

**NOTE:** *Formica polyctena* and *F. rufa* can hybridize and are difficult to distinguish from each other.





## Upload of data

ee-eu.kobotoolbox.org

Formica paralugubris

Formica truncorum

Formica aquilonia

other

**You can leave notes or special observations here**

Large nests with lots of activity clos

Thank you for your assessment! If you want to stay updated on our project, follow us on X/Twitter @Monit\_Ant

Save Draft ⓘ

Submit ✓

Powered by ENKETO



You can collect your data even without a connection to the internet

When you have filled out the survey, you can save it by clicking on “Submit.” You can also save it and complete it later by clicking on “Save Draft.”

If you are not connected to the internet, your entries will be saved in a queue and will be uploaded automatically as soon as the device is connected to the internet. You can also close the app during the survey and continue at the same point later on.

Thank you for using our app! It will help us to monitor wood ants and learn more about their current status.